

Printer Definitions

Printer Definitions Overview	25-2
Contents of Printer Definition Record	25-2
Printer Definitions Maintenance.....	25-3
Add Printer Definition Record (F3, Shift-F3).....	25-4
Display Printer Definition Record (F7, Shift-F7, Ctrl-F7)	25-5
Update Printer Definition Record (F5).....	25-5
Update Unformatted Printer Definition Record (Shift-F5).....	25-5
Delete Printer Definition Record (F4).....	25-6

Printer Definitions Overview

The Printer Definition Record(s) are contained in the SYSTEM CATALOG. These records define the characteristics of your printer(s). When BOOMS starts up, a default printer definition is assigned. If you only have one printer (or if all of your printers are the same), it will not be necessary to define new printers to the system. However, in order to accommodate various printers (draft, NLQ, etc) you may need these additional definitions.

Contents of Printer Definition Record

Following is the contents of the Printer Definition Record:

- **Printer Entry Name** - KEY FIELD for this file. It is used to identify the printer characteristics to the system. This Name can be associated with the BOOMS Startup procedure and is the name referenced in a "SET PRINTC" command (See "Appendix E: The SET COMMAND")
- **Printer Type** - 8-character printer type that is known to the BOOMS System, as follows:
 - IBMPRO** - IBM Proprinter
 - EPSON** - EPSON
 - HPLASER**- Hewlett Packard Laser Jet Series Printer (II, IIP, III, IIIP, IIISi, 4, 4L, 4P, 4M, 4V, etc.)
 - HPLASERL** - Hewlett Packard Laserjet Series Printer (Landscape)
 - HPL2** - Hewlett Packard Laserjet Series Printer (2 copies)
 - HPL3** - Hewlett Packard Laserjet Series Printer (3 copies)
 - HPL4** - Hewlett Packard Laserjet Series Printer (4 copies)
 - HPL5160** - Hewlett Packard Laser Jet Series Printer that supports Avery mailing labels "5160"
 - HPL5162** - Hewlett Packard Laser Jet Series Printer that supports Avery mailing labels "5162"
 - HPCHECKS** - Hewlett Packard Laser Jet Series Printer that supports printing Laser Checks
 - UNKNOWN** - **no characteristics**

 Leave this field blank if your printer is not in the above list or if you have customized the printer settings.

To define a "FAXBOX" (from Data & Control Equipment Ltd.) define a printer with a Name of "FAXBOX" and a Type of "EPSON". Then, update the entry by "blanking" the Type and entering nulls (00's) for all form lengths except 11 inch.

All HP Laserjet definitions (except HPCHECKS) send enhanced 6/8 lines per inch command to the printer. This allows 66/88 lines to be printed per page

The "initial Setup String" for all HP LaserJet definitions is "1B451B2831305500" (to use the PC-8 Symbol Set)

- **Can Print Address?** - is used to indicate ("N") that BOOMS should not print your company addressing information at the top of Orders/Invoices regardless of the setting of the Global Parameter "Print Address on Orders". This allows you to selectively print addressing on some forms but not others.
- **Journal TEXT?** - is used to indicate ("N") that BOOMS should sent the "No Journal Prefix" character when printing to a FAXBOX (Printer Entry Name = FAXBOX). This will suppress the printing of the actual text of the fax on the Journal printer (attached to the Faxbox).

 Some models of the Faxbox can suppress the printing of text automatically. If this is the case on your Faxbox, the printing of text will NOT be controlled by this parameter.

The following fields are preset if your printer is one of the types as listed above. If it isn't each of these fields must be filled in individually. Each Code must be padded with 00's to fill out the field. Each field is 8 hexadecimal digits.

- **Initial Setup** - code to be sent to the printer before each BOOMS printed file (e.g. a printer reset)
- **Reset** - code to be sent to the printer after each BOOMS printed file (e.g. a printer reset)
- **10.0 CPI** - code to switch to 10 characters per inch pitch
- **12.0 CPI** - code to switch to 12 characters per inch pitch
- **Compressed CPI** - code to switch to 15.0 to 20.0 characters per inch (compressed) pitch

- **Top-of-Form Line Feeds (Pg2-Pgx)** - allows 1-10 linefeeds (Lfs) to be inserted at the top of every page except the first. Additional spacing can also be inserted at the top of page 1 by including one or more linefeed characters in the initial setup string (Hexadecimal "0A" is the linefeed character).
- **Doublestrike On** - code to turn on Doublestrike (Bold) mode
- **Doublestrike Off** - code to turn off Doublestrike mode
- **Underline On** - code to turn on UNDERLINE processing mode
- **Underline Off** - code to turn off UNDERLINE processing mode
- **Magenta Color** - code to switch to MAGENTA (RED) color (or any color, for that matter)
- **Cyan Color** - code to switch to CYAN (BLUE) color (or any color, for that matter)
- **Black Color** - code to switch to BLACK color (or any color, for that matter)
- **6 Lines Per Inch** - code to switch to 6 Lines-per-Inch processing mode
- **8 Lines Per Inch** - code to switch to 8 Lines-per-Inch processing mode
- **Draft Font** - code to switch to DRAFT processing mode
- **Correspondence Font** - code to switch to CORRESPONDENCE (NLQ) processing mode
- **1.0 Inch Form Length** - code to switch to a 1.0" FORM LENGTH

 This field should be all zeros for a page printer (e.g. an HPLASER or FAXBOX)

- **3.5 Inch Form Length** - code to switch to a 3.5" FORM LENGTH

 This field should be all zeros for a page printer (e.g. an HPLASER or FAXBOX)

- **5.5 Inch Form Length** - code to switch to a 5.5" FORM LENGTH

 This field should be all zeroes for a page printer (e.g. an HPLASER or FAXBOX)

- **11.0 Inch Form Length** - code to switch to an 11.0" FORM LENGTH
- **U1 (Custom) Formlen** - code for a form length definition that can be referenced by a customized report from the Report Writer
- **U2 (Custom) Formlen** - code for a form length definition that can be referenced by a customized report from the Report Writer
- **Final Setup** - code to be sent to the printer after all other printer setup is done. This may be useful for accessing special features of the printer.

Printer Definition Maintenance

Printer Definitions are maintained by selecting Function, "Printer Defs", Sub-Function "Maintenance" ("P1") from the System Parameters Menu. Selection of this Option results in:

- Replacing of the System Parameters Menu by the Printer Definition screen
- The disappearance of the cursor

You must press a Function Key to select an Option. If you press any key other than a Function Key, the PC speaker will BEEP. The valid Functions Keys are:

- **F3** - ADD a new Printer Definition
- **Shift-F3** - ADD-NOCLEAR a new Printer Definition
- **F4** - DELETE a Printer Definition
- **F5** - UPDATE a Printer Definition
- **Shift-F5** - UPDATE Unformatted Printer Definition
- **F7** - DISPLAY a Printer Definition
- **Shift-F7** - DISPLAY Next Printer Definition Record (same as PgDn)

- **Ctrl-F7** - DISPLAY Prior Printer Definition Record (same as PgUp)

Add Printer Definition Record (F3, Shift-F3)

To Add a Printer Definition, select option Add (F3). This results in:

- The clearing of all input fields (Shift-F3 does not clear input fields)
- STATUS message:

Add Request

- The positioning of the cursor at the first input field (PRINTER Entry Name)

A Printer Definition will be Added to the SYSTEM CATALOG if the key ("Printer Entry Name") being ADDED is not identical to a record already on the SYSTEM CATALOG. Successful Addition of a Printer definition record results in STATUS message:

Added

Display Printer Definition Record (F7, Shift-F7, Ctrl-F7)

Selecting option Display (F7) results in:

- STATUS message:

Display Request

- The positioning of the cursor at the first, and only, input field ("PRINTER Entry Name")

The record will be DISPLAYED after you fill in field " PRINTER Entry Name". If a record can be successfully retrieved from the SYSTEM CATALOG, you will receive STATUS message:

Displayed

The record is then eligible for Update (F5) or Delete (F4). Figure 25.1 is a Display of a PRINTER Definition Record. Once a record has been displayed, following records can be displayed, in sequence, by pressing **Shift-F7** (or **PgDn**). Also, prior records can be displayed, in sequence, by pressing **Ctrl-F7** (or **PgUp**).

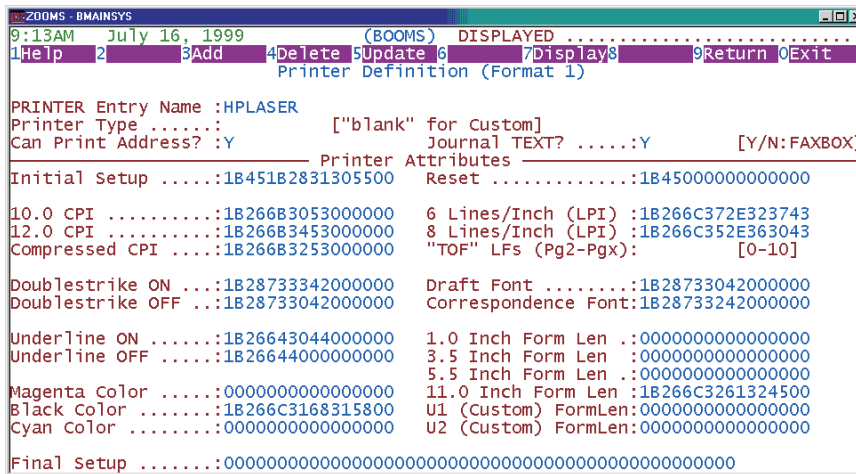


Figure 25.1. Printer Definition Screen (1)

Update Printer Definition Record (F5)

Selecting option Update1 (F5) when a Printer Definition is being displayed, results in:

- Display of the Printer Definition (Format 1) screen
- STATUS message:

Update Request

- The positioning of the cursor at the first input field ELIGIBLE for UPDATE (“Printer Type”)

Fields are entered just as if they were being Added to the file. You can correct any error by re-selecting Option F5. A successful UPDATE results in STATUS message:

Updated

Update Unformatted Printer Definition Record (Shift-F5)

BOOMS prefixes each print file with 322 characters of printer control information as follows (underlined options are the default):

250-byte FAXBOX Call line and variables
 8-byte setup string (no default)
 8-byte Printer mode (Draft/Correspondence)
 8-byte CPI (10/12)
 8-byte color (Black/Cyan/Magenta)
 8-byte LPI (6/8)
 8-byte Form Length (11/1/5.5/U1/U2)
 24-byte Final Printer Setup (no default)

The first printer definition screen controls all but the 1st of the above parameters. In some situations (e.g. HPLASER printer setup) the above fields are not always appropriate (especially when using the Report Writer). In these cases, you can display and update the fields as one continuous string of characters.

Selecting option Update2 (Shift-F5) when a Printer Definition is being displayed, results in:

- The display of the Printer Definitions (Format 2) screen (Figure 25.2)
- STATUS message:

Update Request

- The positioning of the cursor at the first (and only) input field (“Initialize/Setup”)

Enter the required setup string and press “Esc” to finalize the update. A successful UPDATE results in STATUS message:

Updated

