

System Parameters

System Parameters Overview.....	22-2
System Parameters Menu	22-2

System Parameters Overview

BOOMS system parameters is information that is determined by the BOOMS system administrator. For the most part, this information consists of a number of variables that can be “customized” to the needs of your particular installation. They allow you to:

- Define where the BOOMS Files are located
- Define your company and system wide options and preferences
- Define Printers and their characteristics to the system
- Define who has access to the System and its various functions

System Parameters Menu

The BOOMS System Parameters Menu (Figure 22.1) is used to access system wide “global” information. This menu is displayed by selecting Function “B” from the Signon Screen or Function “BOOMS Parms”, SUB-FUNCTION “Parameters Menu” (“B2”) from the Main Selection Menu.

A particular function is selected by a letter and number combination. For example, entering “G1” selects function “Global Defines, Maintenance”. The following sections discuss the various functions.

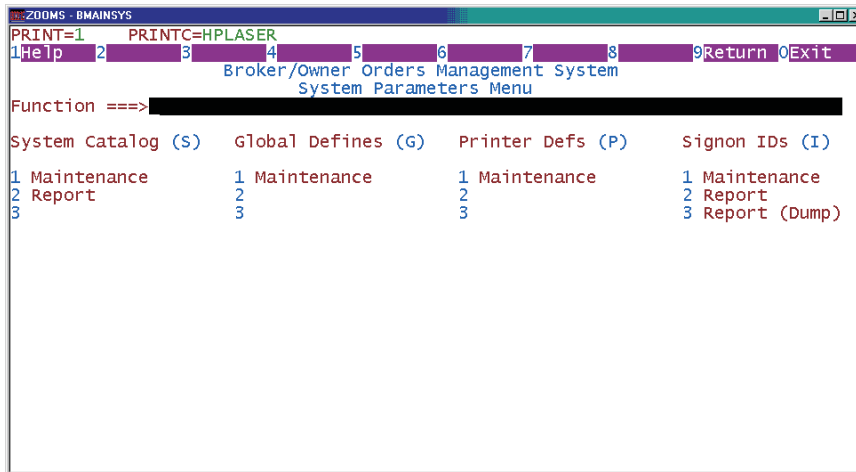


Figure 22.1. BOOMS System Parameters Menu